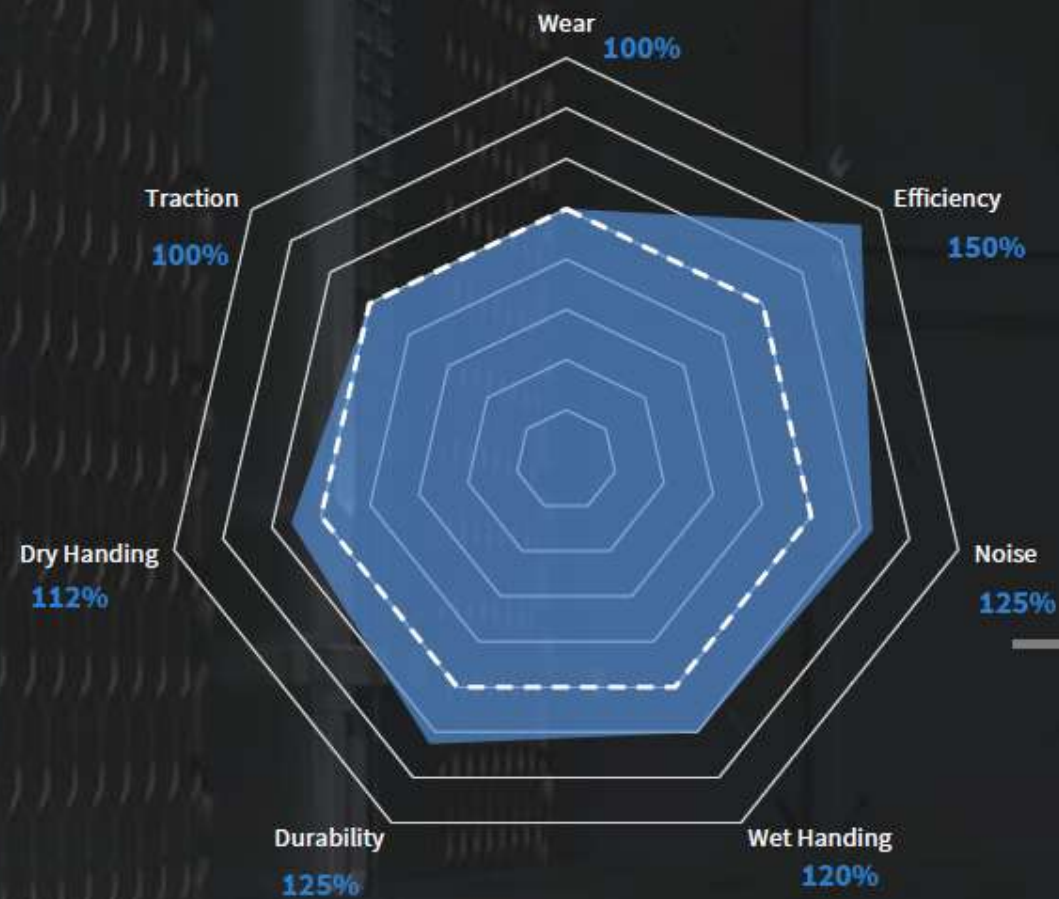


# CITY PRO SERIES



**Minimise costs and maximise safety**

# CITY PRO Z

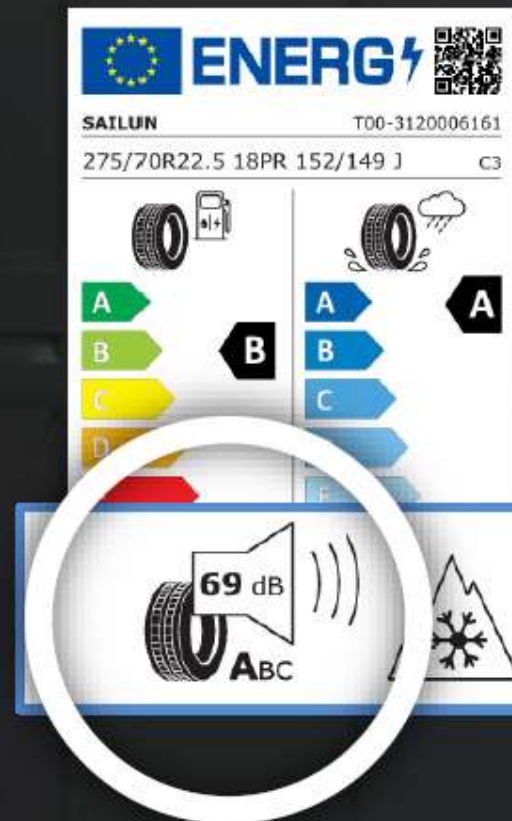
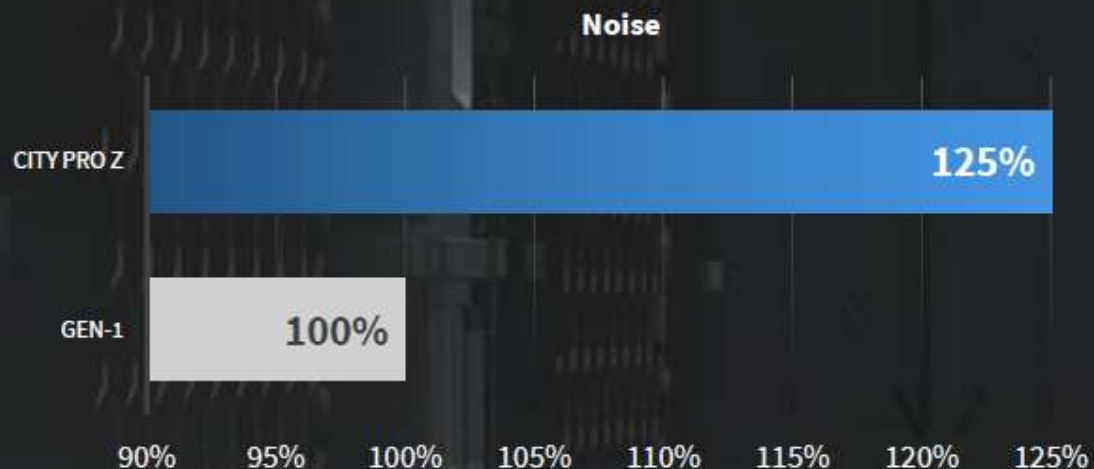


■ City Pro Z    ▬ Gen-1



# Pattern designed to reduce noise levels

Special sleek bionic pattern design minimizes external rolling noise levels, offering a more comfortable passenger ride, achieving the highest EU label grade A.

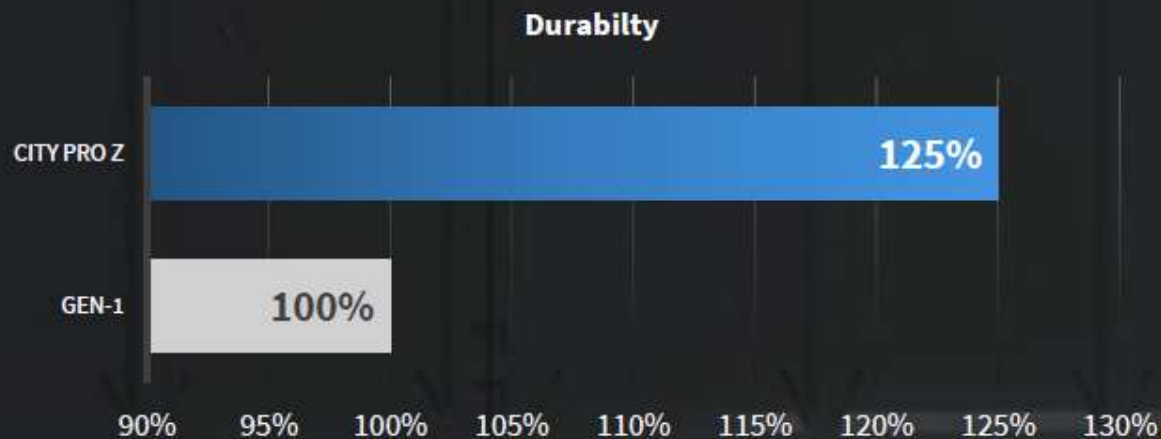






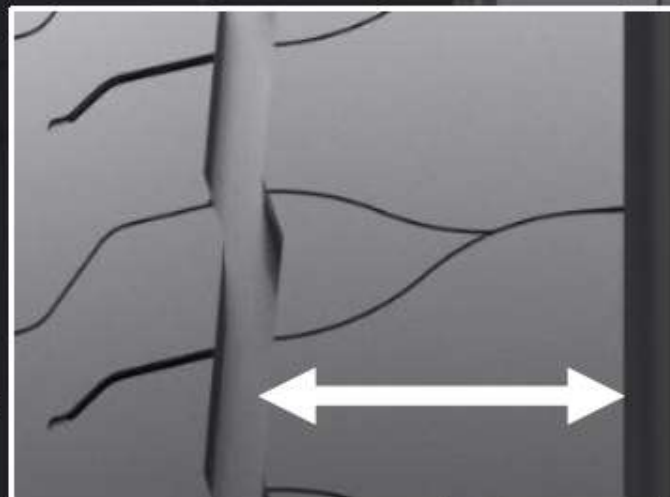
# Reinforced with full sidewall curbing

Protection band and wear indicators – sidewall 30% thicker than conventional products and overall product durability improved 25%.



# Ecopoint3 Urban compound

Ultra-low RR compound and extra wide shoulder ribs allow significant improvement in fuel efficiency.



 **EcoPoint<sup>3</sup>**  
TECHNOLOGY

CITY PRO Z

# Optimized casing structure

Enhanced load capacity by +15% for heavier electric and hybrid vehicles.



**Load Capacity**

**+15%**



**CITY PRO Z**



# CITY PRO - Summary

- Reduce fuel consumption and lower your total cost of ownership
- Minimise environmental impact
- Efficiency and durability combined with Sailun ecopoint<sup>3</sup> technology
- Suitable for electric vehicles

## **CONTROL COSTS**

### **OPTIMISE TOTAL COST OF OWNERSHIP**

- Fuel savings delivered by low-rolling resistance compound<sup>(1)</sup>
- Low cost per mile and high energy efficiency<sup>(1)</sup>

## **CERTIFIED QUALITY**

### **KEEP VEHICLES AND PASSENGERS SAFE**

- 3PMSF certificated for all road and weather conditions
- Reinforced sidewalls for protection and increased longevity
- Best-in-class safety with A-Rated wet grip<sup>(2)</sup>

## **ECO-DESIGN**

### **CO2 SAVING WITH ECOPOINT3 TECHNOLOGY**

- Low carbon manufacturing process<sup>(3)</sup>
- Highly energy efficient product performance<sup>(1)</sup>
- Low noise: A-rated<sup>(2)</sup>
- Suitable for electric vehicles



# CITY PRO - Target fleet client

---



**90% Urban**  
**10% Regional**



**≤150 Km**  
Stop – start traffic



**Targets CPK**  
Mileage



**Targets efficiency**  
Energy consumption