



## Whoever you take on a journey Conti Coach

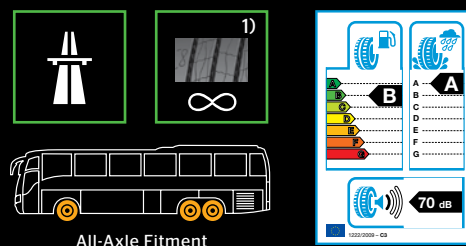
- › Excellent braking performance
- › Outstanding fuel efficiency
- › Comfortable ride



## Conti Coach

The efficient tyre for long-distance journeys.

**GENERATION 3. DRIVEN BY YOUR NEEDS.**



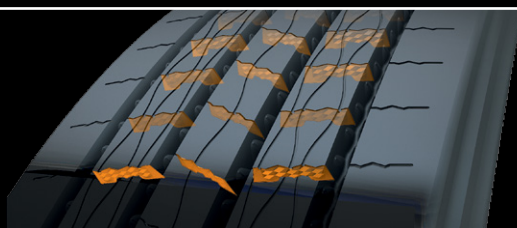
All-Axle Fitment

## Conti Coach HA3

For long-distance coach journeys, reliability and efficiency are essential. Our Conti Coach HA3 delivers maximum safety and reduced rolling resistance – even under demanding conditions. A tyre so safe, its wet performance has been labeled with the best EU grade “A”, delivering your passengers safely.

## Product highlights

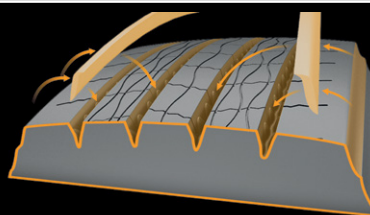
### Excellent braking performance



Example: 3D siping technology

- › Wet braking over tread lifetime with full-depth 3D siping technology
- › Wet optimised compound for better performance in the wet
- › 3D interlocking sipes maintain pattern stiffness for maximum braking effect
- › M+S capability for all weather conditions

### Outstanding fuel efficiency



Example: Fuel Saving Edge

- › Improved tread void ratio and Fuel Saving Edge without compromising wet performance
- › Optimised “belt to tread” width ratio, providing less deflection on the tread area

## Further technical features

- › Optimised pressure distribution in the contact patch for uniform wear
- › Improved tread void ratio for more wear volume
- › Dedicated long-distance coach tyre contour for improved even wear

**Benefit: more mileage leads to long-term cost reduction**

- › Staggered siping technology with reduced noise intensity and optimised noise frequency

**Benefit: quieter running and increased ride comfort**

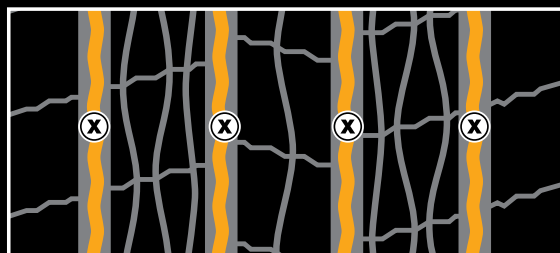
Available in **ContiRe™**

- › Our premium hot retreading service gives new life to your worn Continental truck tyre, enabling the tyre to meet the full economic performance of the tyre. ContiRe™ production is compatible to how we manufacture our new tyres – using the same profiles and compound mixtures. Exclusively we use Continental casings, which are retreaded from bead to bead. This method also renews the sidewalls, and the tyres remain regroovable.

**Benefit: optimal retreadability for operational efficiency**

## Regrooving recommendations

**Conti Coach HA3**









Size	Depth (mm)	Width (mm)
295/80 R 22.5	3.5	6-7

# GENERATION 3.

## DRIVEN BY YOUR NEEDS.

### Technical data and air pressure recommendations

Tyre size	Operating code						EU tyre label			Rim		Tyre dimensions						LI <sup>1)</sup>	Tyre fit-ment	Load capacity (kg) per axle at tyre pressure <sup>6)</sup> (bar) (psi)			
	Pattern	LI/SI <sup>1)</sup>	PR	M+S	Speed Index and reference speed (km/h)	TT/TL <sup>2)</sup>				Rim-width	Min. distance between rim centers	Max. standard value in service		Actual value		Stat. radius	Rolling circumference						
												Width	Outer-Ø	Width + 1%	Outer-Ø ± 1%					± 1.5 %	± 2 %		
295/80 R 22.5	Conti Coach HA3	154/149 M	16	M+S	M 130	TL	B	A		8.25 9.00	326 335	302 310	1062	290 298	1044	487	3185	154 149	S D	6785 11760	7140 12380	7500 13000	
	Conti Coach HA3 ED	154/149 M	16		M 130	TL	C	B															
	Conti Coach HA3 AC	154/149 M	16		M 130	TL	-	-	-														
315/80 R 22.5	Conti Coach HA3	156/150 L		M+S	L 120	TL	B	A		9.00 9.75	351 360	318 326	1096	312 320	1076	500	3280	156 150	S D	6910 12120	7280 12765	7640 13400	8000

Data acc. to DIN 7805/4, WdK-Guidelines 134/2, 142/2, 143/14, 143/25

1) Load index single/dual wheel fitment and speed symbol

2) TT = Tube Type, TL = Tubeless

3) Fuel efficiency

4) Wet grip

5) External rolling noise (db)

6) For tyre pressures of 8.0 bar (116 psi) or greater, use valve slit cover plate

10/2013

Continental Tyre Group  
191 High Street  
Yiewsley  
West Drayton  
UB7 7XW