

POSITION: TRAILER

GHT22

M+S



Recommended Application
Long Haul Service / Regional Haul Service



- **GS I-FEAT Technology**

Ensures high efficient tyre contour with high durability and even tread wear

- **Chamfered Shoulder**

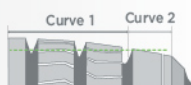
Reduces the stress on the shoulder, improves heat resistance and durability

- **Straight Outer Tread Groove**

Improves the drainage performance

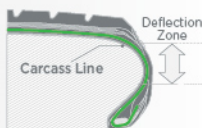
- **Dural Tread Radius**

Makes even ground contacting area, improves the wear resistance



- **Optimized Carcass Line Profile**

Positions the most suitable deflection zone, reduces sidewall heat generation



Size	LI / SI	PR	Rolling Resistance	Wet Grip	Noise dB	Noise Level
435/50R19.5	160 J	22	C	A	72	B
445/45R19.5	160 J	22	C	A	72	B

