

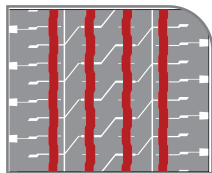


M+S

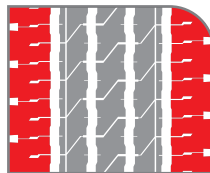


OH - 119

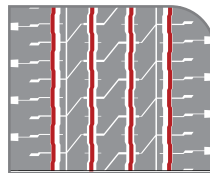
Steer axle tyre for long haul and regional applications



Optimized groove design for Long haul and Regional usage.






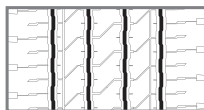
Solid shoulder design for better handling and steering performance.



Stone ejectors in all grooves protect crown area from stone penetration for safe driving.



Size	PR	Load Index	Speed Symbol	Tread Depth			
				mm			
385/65R22.5	20	160	K	15.0	C	A	72dB/B
385/65R22.5	22	164	K	15.0	C	A	72dB/B



Regrooving Guidelines

Size	D: Regrooving Depth	W: Regrooving Width
	mm	mm
385/65R22.5	2.5	7.0 - 8.0

Upcoming Size

Size	LI/SS
385/55R22.5	160K