

NEW



M+S

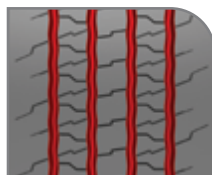


OH - 120

Steer axle tyre for regional applications



Wider tread width & 3D sipe design provides excellent traction & enhanced steering performance in dry, wet & snow conditions.



Optimized grooves design to avoid damage from stone penetration.

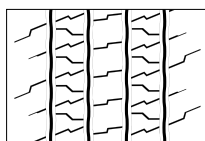


Strong shoulder rib design to resist uneven wear.

OH - 120



Size	PR	Load Index	Speed Symbol	Tread Depth			
				mm			
265/70R19.5	16	140/138	M	13.0	C	B	74dB/B
285/70R19.5	16	146/144	M	13.0	C	B	74dB/B
305/70R19.5	18	148/145	M	13.5	C	B	74dB/B



Regrooving Guidelines

Size	D: Regrooving Depth	W: Regrooving Width
	mm	mm
265/70R19.5	2.5	7.0-8.0
285/70R19.5	2.5	7.0-8.0
305/70R19.5	2.5	7.0-8.0

Upcoming Size

Size	LI/SS
205/75R17.5	124/122M