

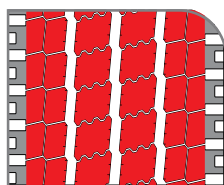


M+S

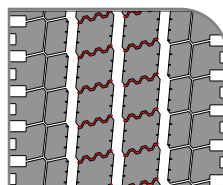


OH - 501

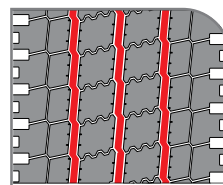
Traction tyre with 'All Position' capability for Urban application, with kerb protection.



4 wide Ribs increases rolling tread width ensuring longer mileage.






Full depth sipes in 2 center ribs for excellent traction and braking.

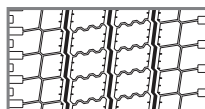


Zig-zag grooves delivers excellent steering performance.

OH - 501



Size	PR	Load Index	Speed Symbol	Tread Depth			
				mm			
275/70R22.5	16	150/148	J	17.0	C	C	75dB/B



Regrooving Guidelines

Size	D: Regrooving Depth	W: Regrooving Width
	mm	mm
275/70R22.5	2.5	7.0 - 8.0