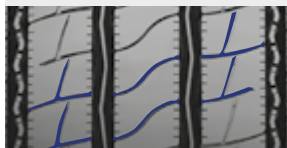


FH:01™ PROWAY™



Low fuel consumption; great efficiency on highways and performance in winter conditions.

Innovative wave sipes design and 3PMSF marking



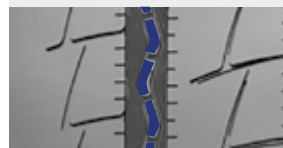
Superior handling and grip performance in all weather conditions and on all road surfaces

RSR - Rotated Shoulder Rib - for the correct distribution of the footprint contact pressure







Optimal even wear and high mileage

Stone ejectors at the bottom of the lateral grooves



Stones trapping prevention and enhanced tyre durability and retreadability

SIZE	LOAD INDEX / SPEED CODE	MARKING					
315/60 R 22.5*	154/148 L	M+S	B	A	A	69dB	✓
315/70 R 22.5	156/150 L (154/150 M)	M+S	B	B	A	69dB	✓
315/80 R 22.5	158/150 L (156/150 M)	M+S	B	A	A	69dB	✓

(*) RFID MARKING

INDEX	PROMETON: TYRE SOLUTIONS FOR PROFESSIONALS	KEY FIGURES (2022 DATA)	RANGE OVERVIEW	UNIQUE INNOVATIVE TECHNOLOGICAL PLATFORM	ABBREVIATIONS AND SYMBOLS EXPLANATION	FUEL EFFICIENCY	VERSATILITY	WINTER	COACH	URBAN	CONSTRUCTION	QUARRY & MINE	SPECIAL USE	PERFORMANCE TYRES	OTHER PRODUCTS	TYRE MARKINGS	LOAD AND SPEED TABLES	NEW EU TYRE LABELLING REGULATION	INFLATION PRESSURE	STORAGE IN A ROW ON PALLETS
-------	--	-------------------------	----------------	--	---------------------------------------	-----------------	-------------	--------	-------	-------	--------------	---------------	-------------	-------------------	----------------	---------------	-----------------------	----------------------------------	--------------------	-----------------------------