



WINTER

FW:01™

SATT™
Spirit Advanced Technology for Trucks

3SB



BWC



DLTC



FRC



HBW



RSR



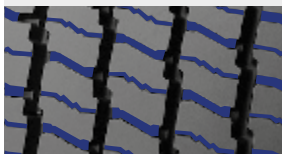
Designed to be reliable and safe in critical winter conditions, while ensuring high mileage, grip and retreadability.

Shoulder tread contour designed for the correct distribution of footprint contact pressure



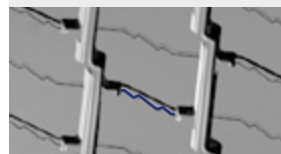
Assure even wear and high mileage

Dense siping



Excellent grip and steering control on wet surfaces

Deep siping in central rib bridges



Traction and snow grip beyond half tyre wear

Special tread compound formulation



Resistance at low temperature

SIZE	LOAD INDEX / SPEED CODE	MARKING						
295/80 R 22.5	154/149 M	M+S	C	A	B	72dB	✓	
315/70 R 22.5	156/150 L (154/150 M)	M+S	C	B	B	73dB	✓	
315/80 R 22.5	156/150 L (154/150 M)	M+S	C	A	B	72dB	✓	
385/55 R 22.5*	158 L (160 K)	M+S	C	B	B	73dB	✓	
385/65 R 22.5	158 L (160 K)	M+S	C	B	B	73dB	✓	

(*) RFID MARKING