

# R02 PROFUEL™ STEER 22.5"

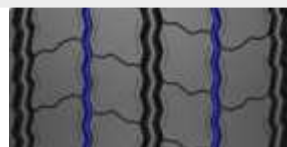


The latest generation of steer tyres for versatility application, ensuring competitive fuel efficiency, high mileage and integrity.

Innovative tread pattern design characterized by:

3 large grooves

2 narrow grooves



Guarantee even wear, mileage and deliver handling in severe wet conditions

Progressive entry of sipes under the footprint



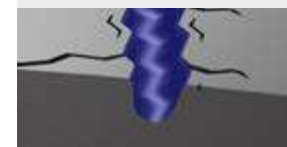
Maximum driving comfort

New functional sipes



Superior grip, performance in different weather conditions and constant safety

HGE - High Grip Evolution - technology (Prometeon patent) featuring innovative grooves design



Enhanced grip performance throughout the tyre life, low noise generation for great driving comfort

SIZE	LOAD INDEX / SPEED CODE	MARKING					
315/70 R 22.5	156/150 L (154/150 M)	M+S	B	B	A	69dB	✓
355/50 R 22.5	156 L	M+S	B	C	A	69dB	✓
385/55 R 22.5	162 K (158 L)	M+S	B	B	A	69dB	✓
385/65 R 22.5*	164 K (158 L)	M+S HL					✓

(\*) UNDER PREPARATION