

SAILUN
TYRE



All position tyre designed for stop-start urban operations.

ENERG

SAILUN T00-3120006161

275/70R22.5 18PR 152/149 J C3

A	A
B	B
C	C
D	D
E	E

69 dB

ABC

CITY PRO Z.

Minimise costs and maximise safety.

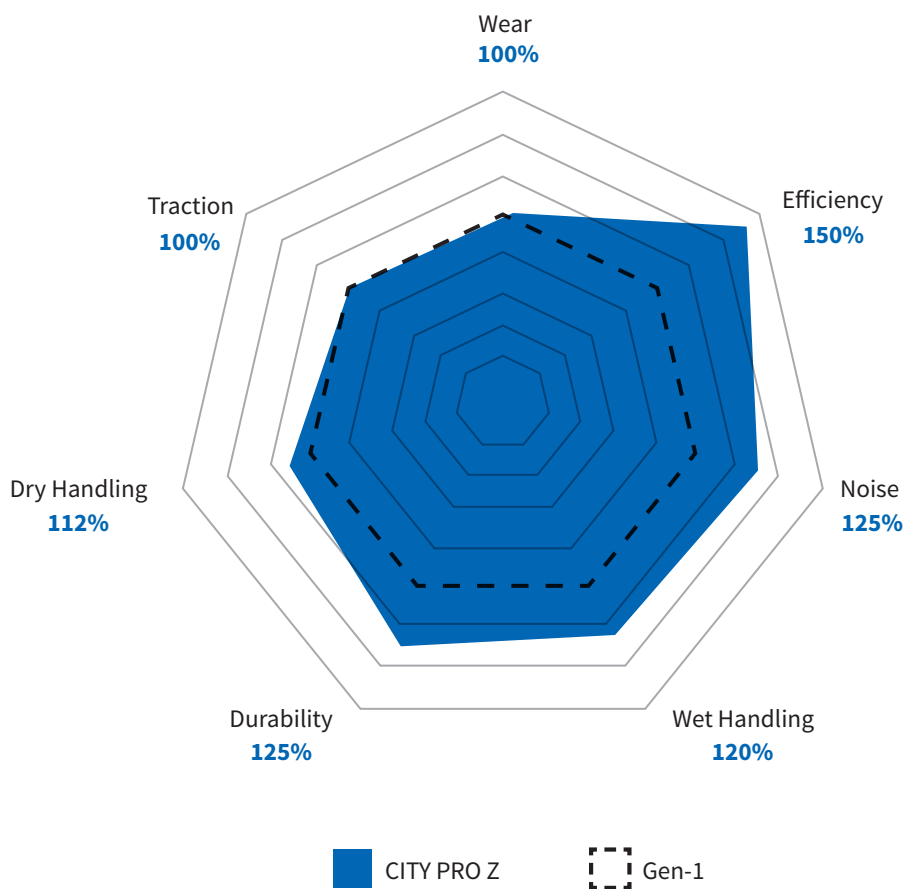


- Reduce your fuel consumption
- Safe and smoothly urban passenger transportation
- Low carbon footprint
- Suitable for electric vehicles

EcoPoint³
TECHNOLOGY



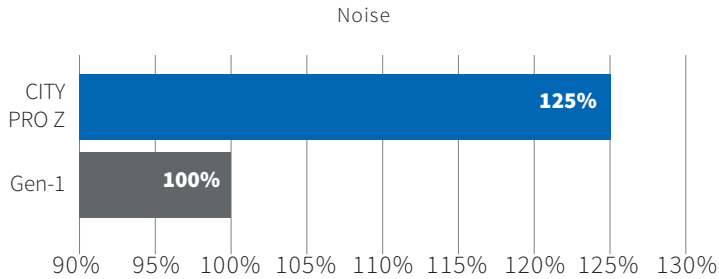
CITY PRO Z.



- **Safety and Reduced Noise:** Bionic sipe design that provides superior grip performance, ensuring safer driving experiences. Additionally, our special pattern design minimizes noise levels, offering a more comfortable passenger ride.
- **Lowest Rolling Resistance:** EcoPoint³ technology combined with wider tread block design, decrease rolling resistance by 10%, offering a longer life by 5%.
- **High Load Capacity:** Optimised and strengthened carcass structure improve load capacity by 15% compared to city convoy. Suitable for 8 Ton axles.

Pattern Designed to Reduce Noise Levels.

Special sleek bionic pattern design minimizes external rolling noise levels, offering a more comfortable passenger ride, achieving the highest EU label grade A.

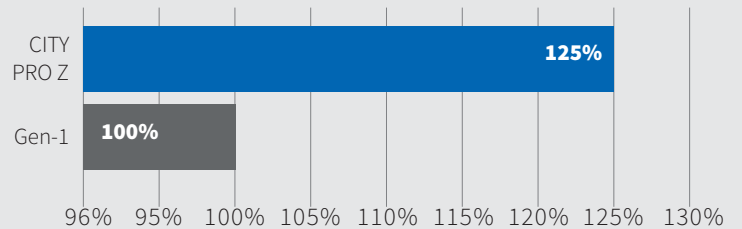


Reinforced with Full Sidewall Curbing.

Protection band and wear indicators – sidewall 30% thicker than conventional products and overall product durability improved 25%.



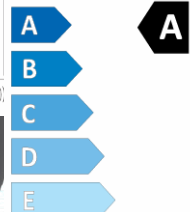
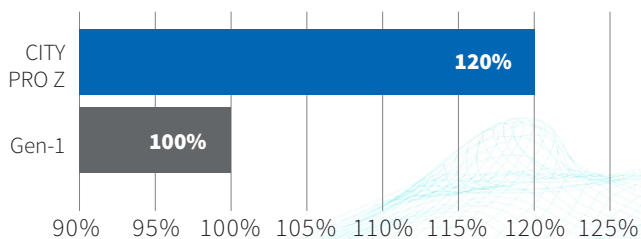
Durability



Bionic Sipe Design.

Provides superior grip performance, ensuring safer driving experiences, especially in wet weather conditions.

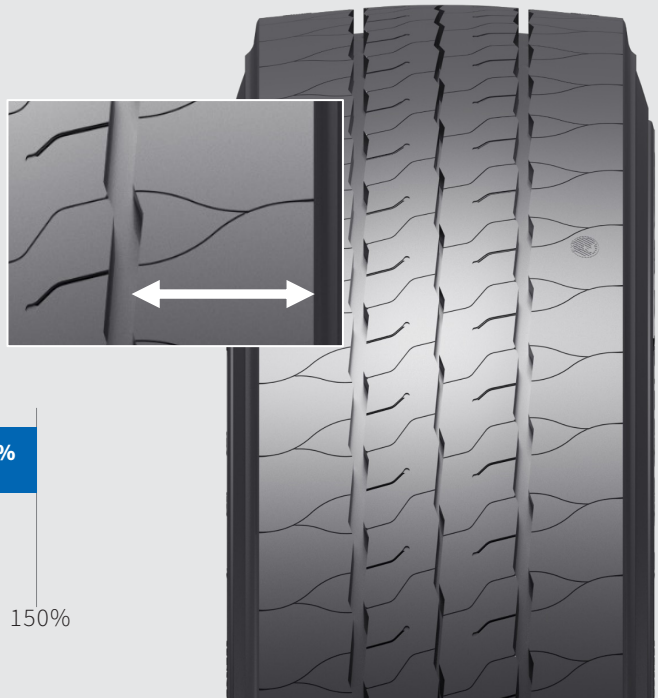
Wet Handling



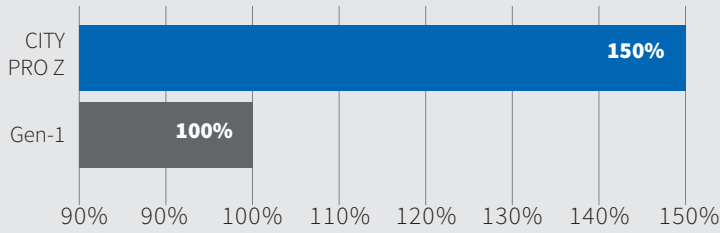


Ecopoint³ Urban Compound.

Ultra-low RR compound and extra wide shoulder ribs allow 10% improvement in fuel efficiency.



Efficiency



Optimized Casing Structure.

Enhanced load capacity by +15% for heavier electric and hybrid vehicles.



Size	Ply Rating	Load Index	Speed Rating	EPREL Codes	RR	WG	NG Db	NG	Certificate Type
275/70R22.5	18PR	152/149	J		B	A	69	A	M+S/3PMSF



SUSTAINABLE PERFORMANCE.