

**SAILUN**  
**TYRE**



Drive axle tyre designed for highway, national and regional operations.

## TRANSPORT PRO D.



Durable energy efficiency with high mileage capacity.

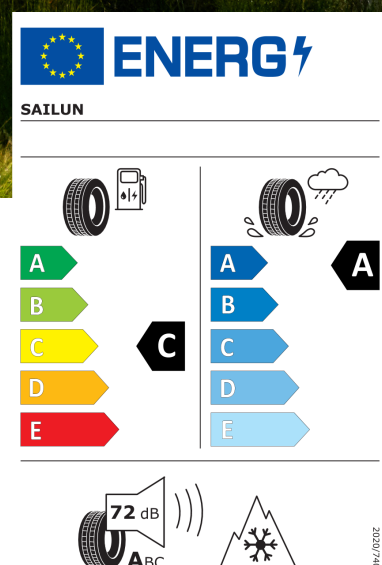


- Durability and Fuel Saving
- Lower CO<sub>2</sub> Impact
- Mileage and Durability Combined  
Thanks to Sailun Technologies
- Suitable for Electric Vehicles

**EcoPoint<sup>3</sup>**  
TECHNOLOGY

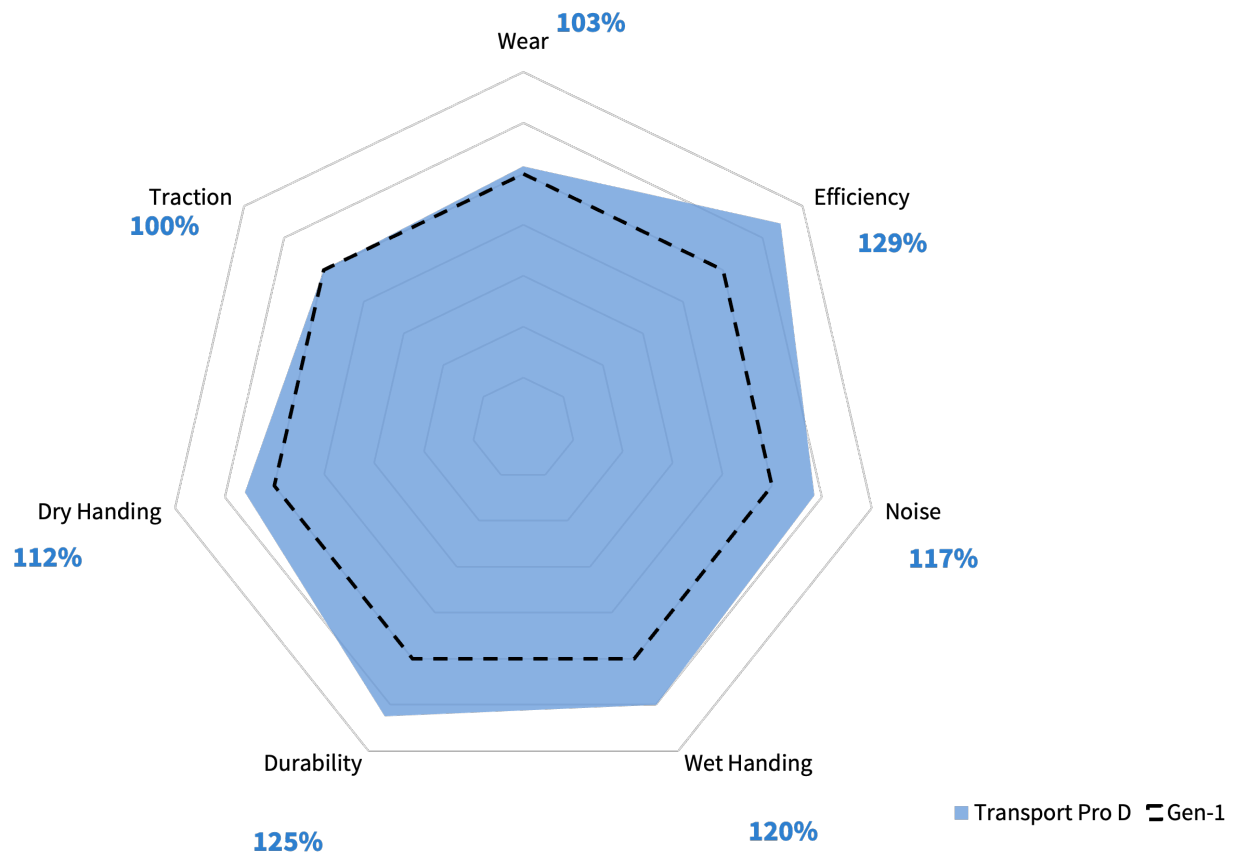


Sailun TBR Catalogue





# DELIVERY PRO D.

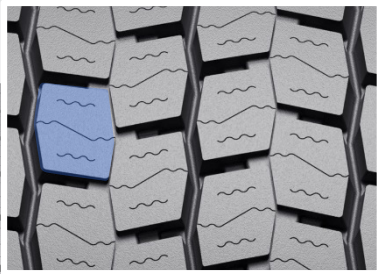
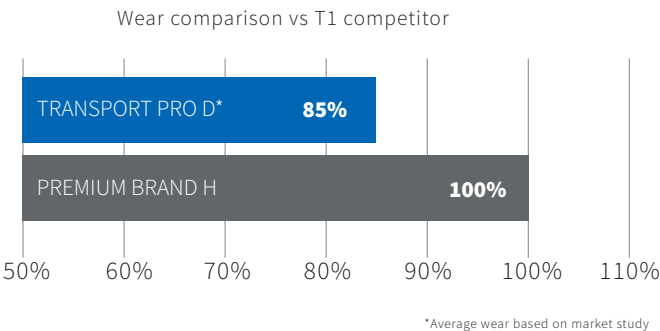


Drive axle tyre is designed for heavy-duty, hybrid vehicle applications, offering fleet operators a combination of high durability, energy efficiency, and superior mileage.

- **Traction:** Open shoulder and lateral groove design delivers superior traction. Additionally, 3D full depth sipes provide extra biting edges for enhanced wet and snow grip performance, ensuring your vehicle maintains traction and performs safely in various conditions.
- **Efficient Mileage:** Three main grooves and greater tread block to groove ratio reduce rolling resistance. Wide tread design enhances the rigidity and improves handling stability, offering increased mileage.
- **Wear:** Optimised tread block dimensions improve side rigidity of the tread, prevent shoulder irregular wear, offering a longer life. Variable pitch design reduces rolling noise.

Symmetrical pattern design

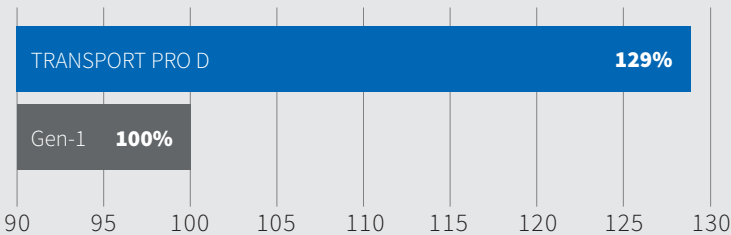
Balances wear and efficiency performance, reduced noise and ease of rotation.



Greater block to groove ratio

Condensed tread blocks and wider footprint reduces rolling resistance and improving energy efficiency.

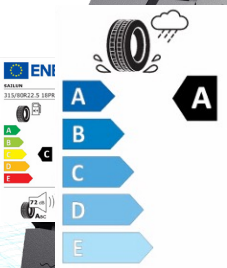
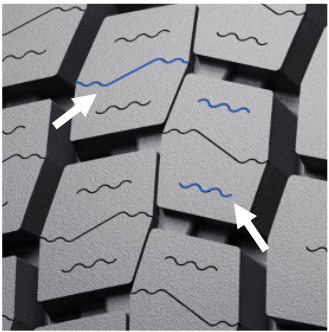
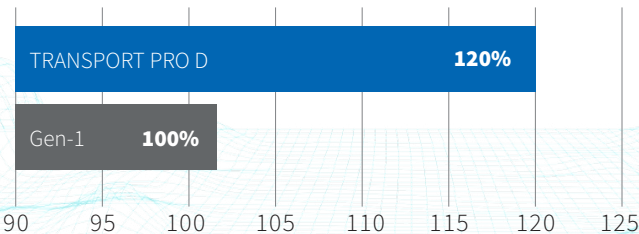
Efficiency



Mixed straight and serrated sipes for diverse conditions

Enhanced traction in diverse usage conditions with open shoulders and lateral groove design to deliver superior traction. Additionally, 3D full depth sipes provide extra biting edges for enhanced wet and snow grip performance.

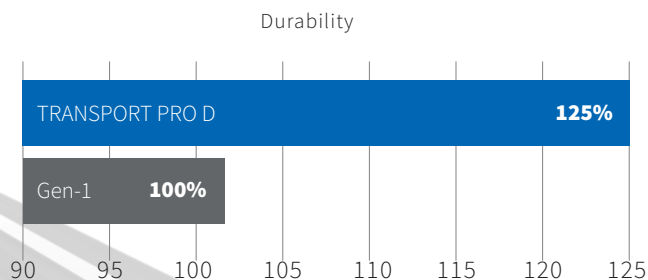
Wet Handling



WIDE

## Durability and Efficiency

Wide tread design enhances the rigidity and improves handling stability, offering increased mileage.



## Hybrid Performance

Mileage and durability combined thanks to Sailun technologies plus Lower CO2 impact and Suitable for electric vehicles

**EcoPoint<sup>3</sup>**  
TECHNOLOGY

**SAILUN**  
GEN-1

E



C



B



**SAILUN**  
TRANSPORT PRO D

C



A



A



Size	Ply Rating	Load Index	Speed Rating	EPREL Codes	RR	WG	NG Db	NG	Certificate Type
315/60R22.5	18PR	152/148L	L		C	A	72	A	M+S/3PMSF/TRACTION
315/70R22.5	18PR	154/150L(152/148M)	L(M)		C	A	72	A	M+S/3PMSF/TRACTION
315/80R22.5	20PR	156/150L(154/150M)	L(M)		C	A	72	A	M+S/3PMSF/TRACTION
295/80R22.5	18PR	152/149M	M		C	A	72	A	M+S/3PMSF/TRACTION

**SAILUN**  
**TYRE**

SUSTAINABLE PERFORMANCE.